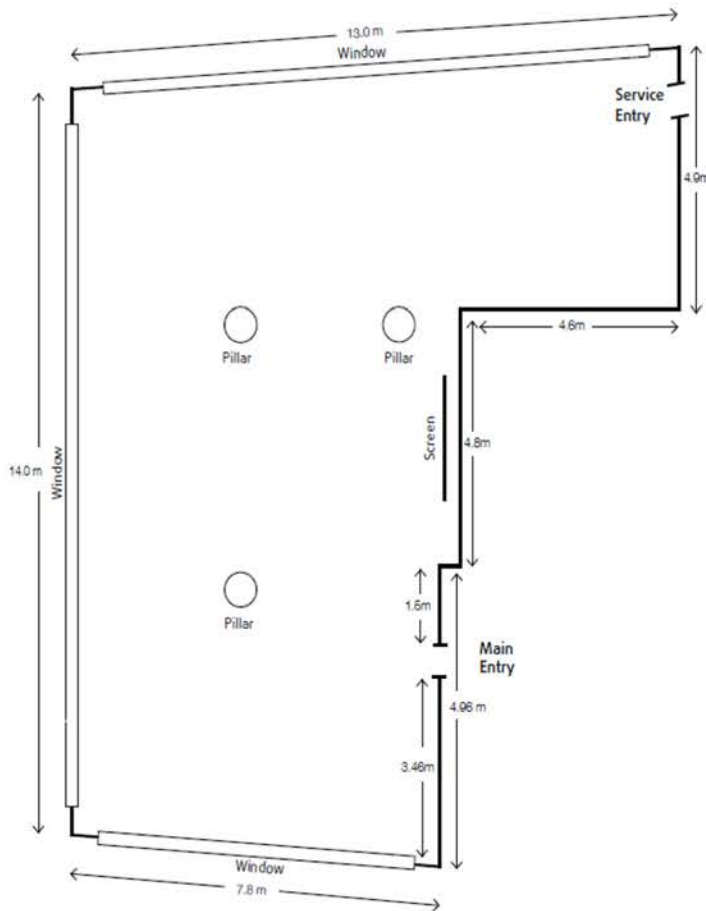


Panorama Room

ROOM CAPACITIES	Sqm							
		THEATRE	CLASSROOM	U-SHAPE	CABARET	BANQUET	COCKTAIL	BOARDROOM
PANORAMA ROOM	110	50	30	20	40	80	110	20

Situated on the 10th floor of the hotel, the Panorama Room is spacious and versatile with built-in-audio equipment. With plenty of natural light and space, this is an elegant venue with breathtaking views of Brisbane City and Roma Street Parklands that you won't find elsewhere. This space is ideal for events seeking a picture-perfect backdrop.



Ready to chat?

Contact us to talk about your upcoming meeting or event and book your site inspection to see our stunning views first hand.